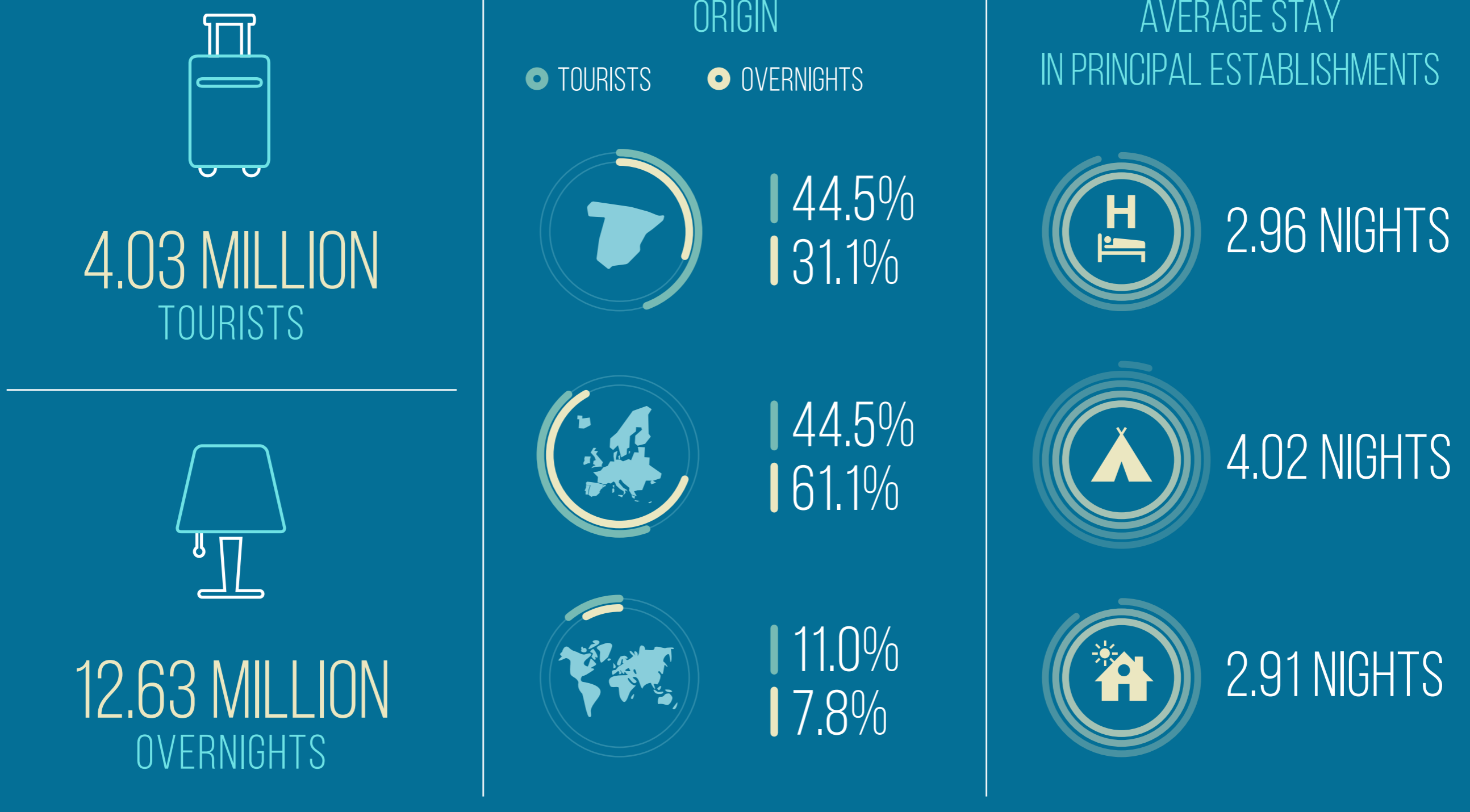


TOURISM IN BARCELONA'S SURROUNDINGS 2016*

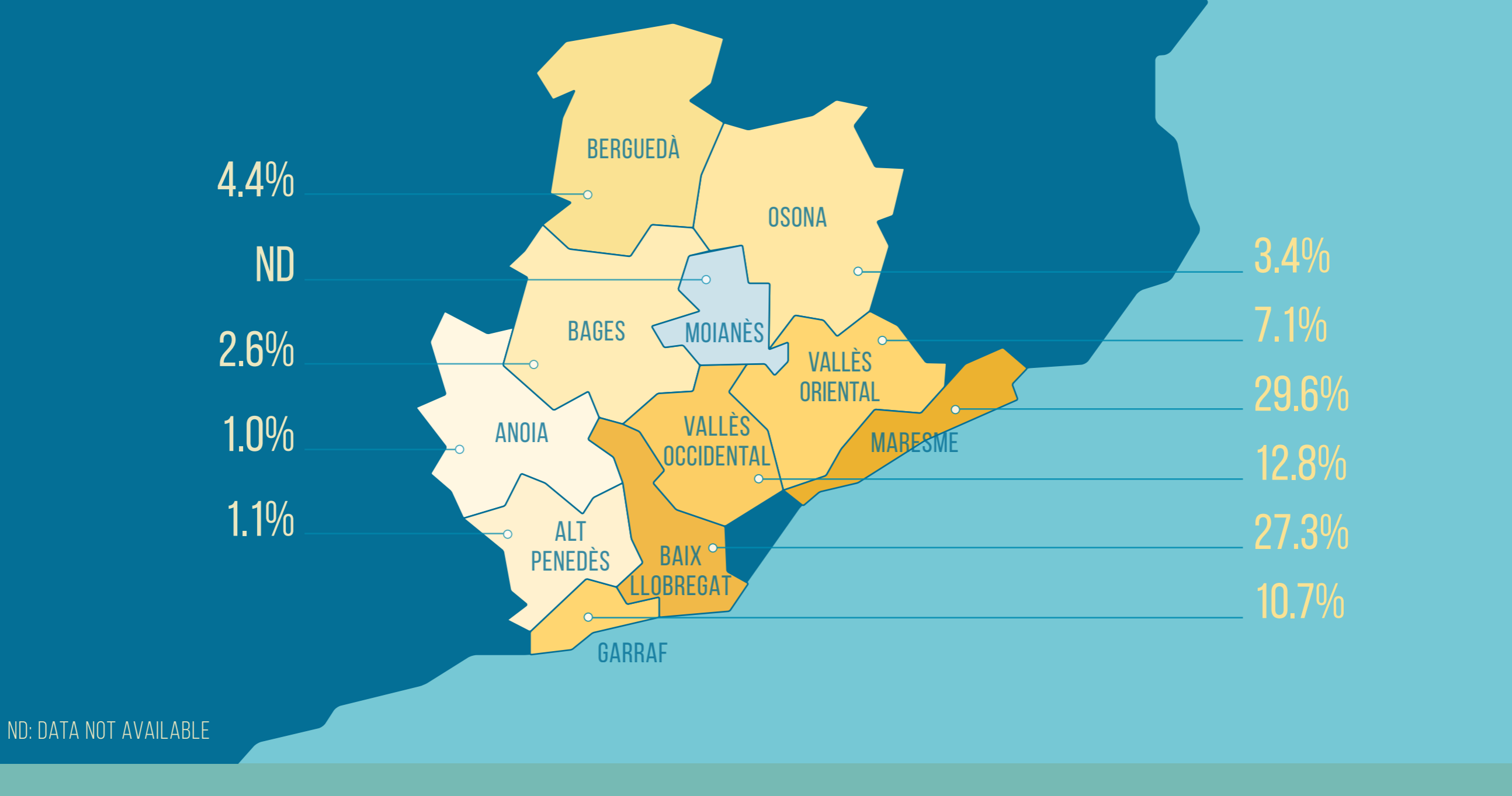
* BARCELONA'S SURROUNDINGS CONSIDER ALL REGIONS OF BARCELONA EXCEPT BARCELONÈS. DATA 2015.

DEMAND

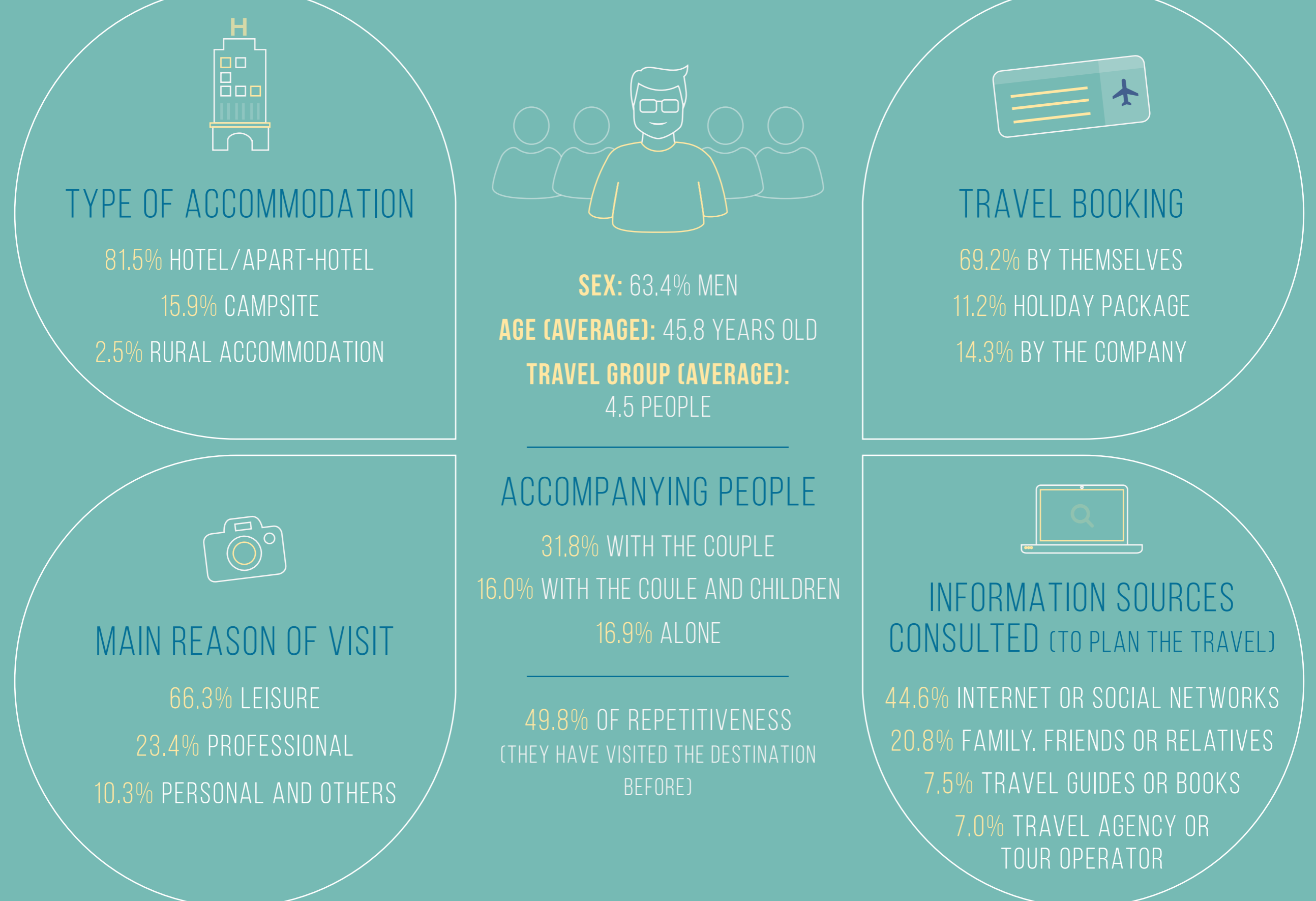


TOURIST DISTRIBUTION

REGIONAL DISTRIBUTION OF TOURISTS IN BARCELONA'S SURROUNDINGS

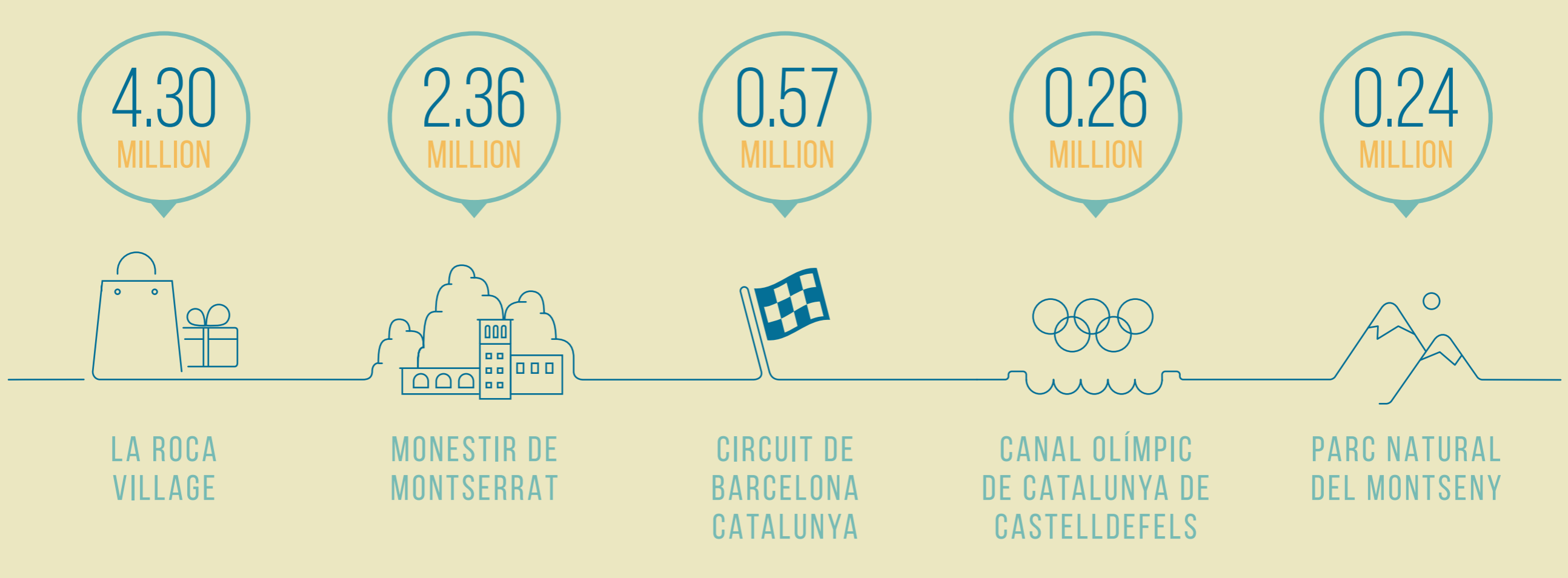


TOURIST PROFILE



ATTRACTIONS

NUMBER OF VISITORS TO PRINCIPAL ATTRACTIONS



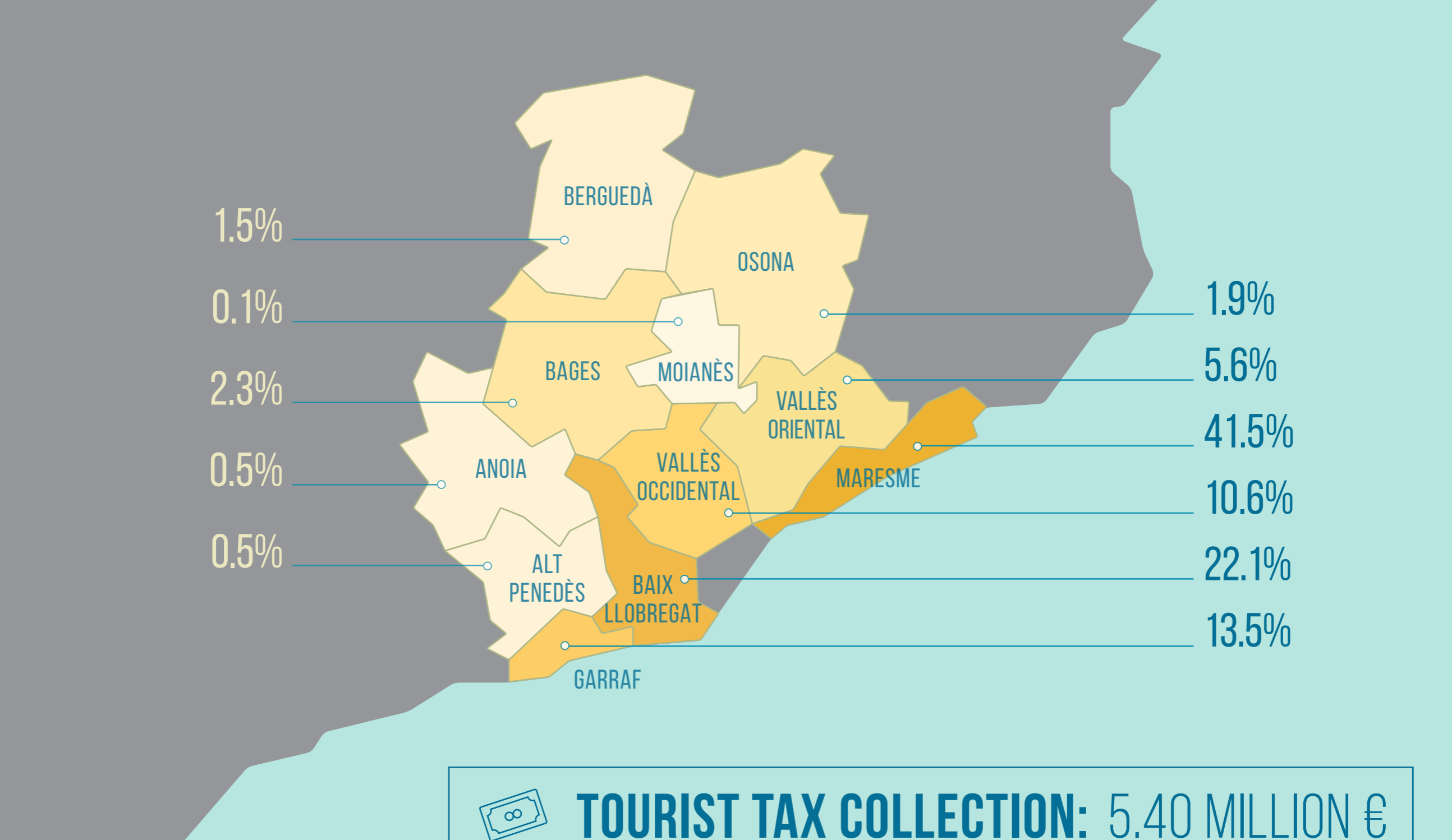
ECONOMIC IMPACTS



*INCLUDING TRANSPORT, ACCOMMODATION AND STAY

TOURIST TAX

REGIONAL DISTRIBUTION OF THE TOURIST TAX COLLECTION



VALUATION AND REPUTATION



* DIRECT AUDIENCES ** SCALE 0 TO 10

SOURCES: TOURIST ACCOMMODATION OCCUPANCY SURVEY (INE AND IDESCAT); CHARACTERIZATION OF TOURISTS SURVEY EDETUR (LABTURISME); DIRECCIÓ GENERAL DE TURISME AND DEPARTAMENT D'EMPRESA I OCUPACIÓ DE GENERALITAT DE CATALUNYA; GERÈNCIA DE SERVEIS DE TURISME, OFICINA TÈCNICA DE PARCS NATURALS AND XARXA DE MUSEUS LOCALS OF BARCELONA DEPUTATION, AND EQUIPMENT AND PLACES OF INTEREST OF BARCELONA SURROUNDINGS.