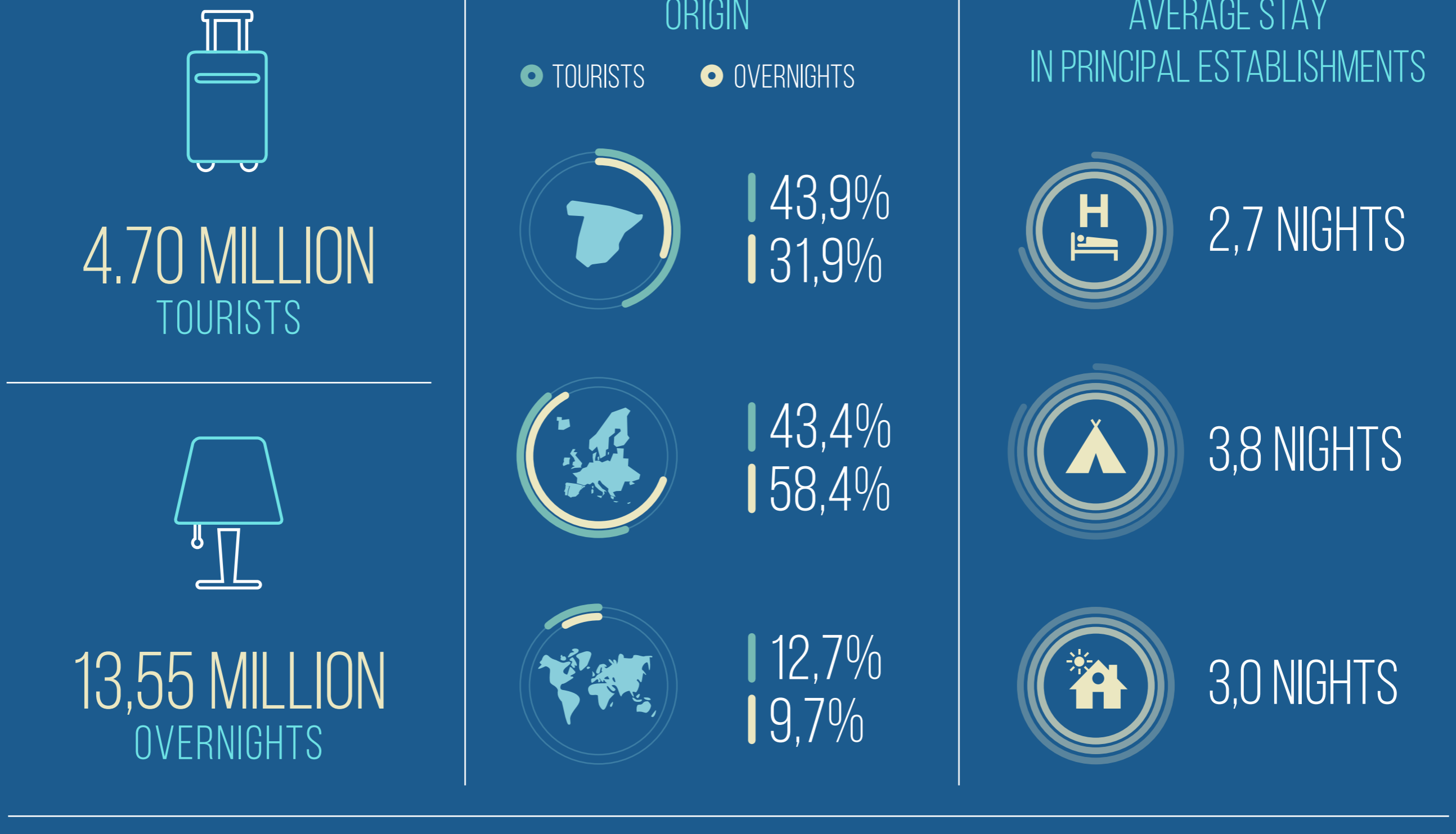


TOURISM IN BARCELONA REGION 2017*

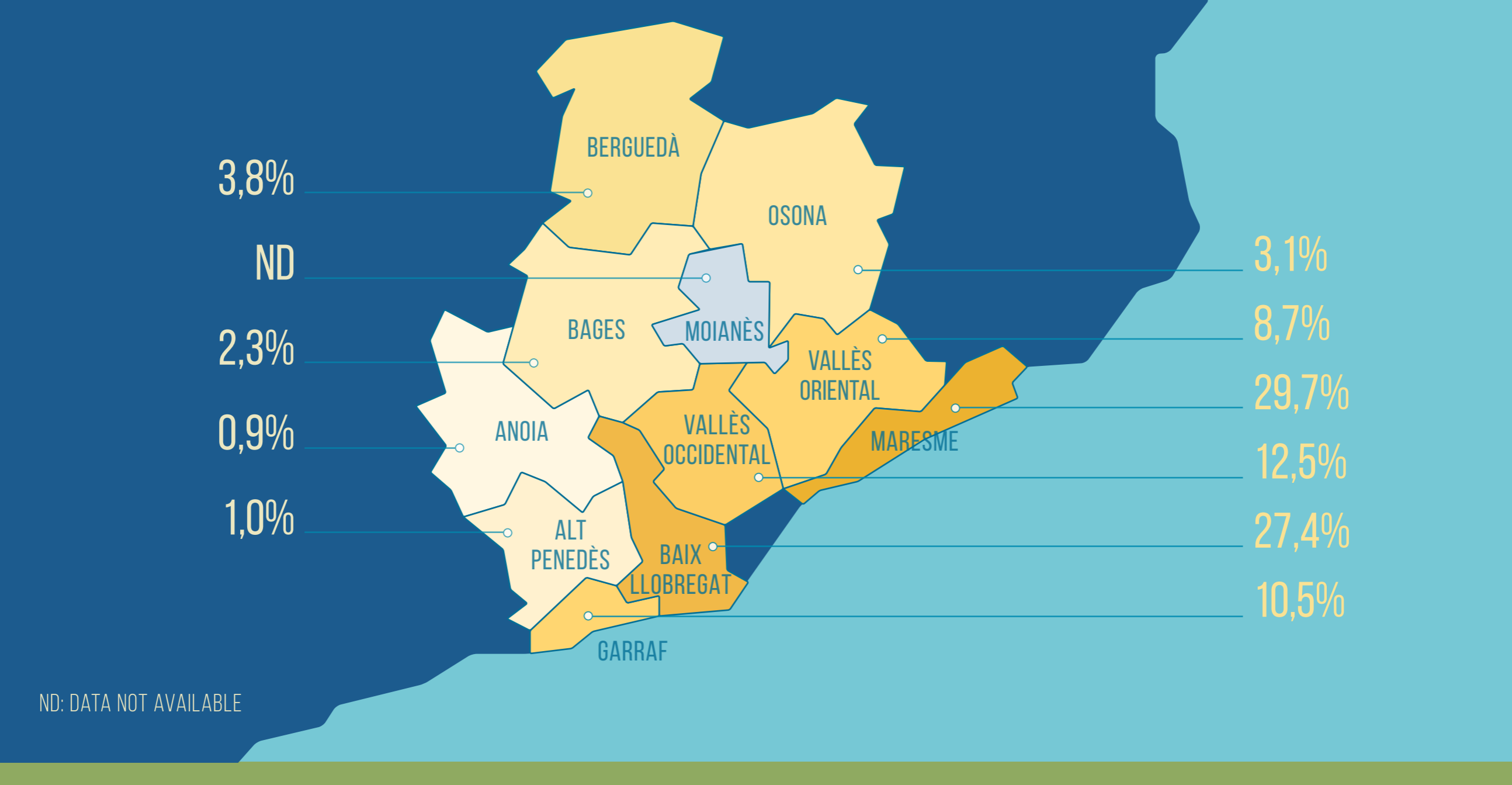
* BARCELONA REGION CONSIDER ALL REGIONS OF BARCELONA EXCEPT BARCELONÈS. DATA 2016.

DEMAND



TOURIST DISTRIBUTION

REGIONAL DISTRIBUTION OF TOURISTS IN BARCELONA REGION

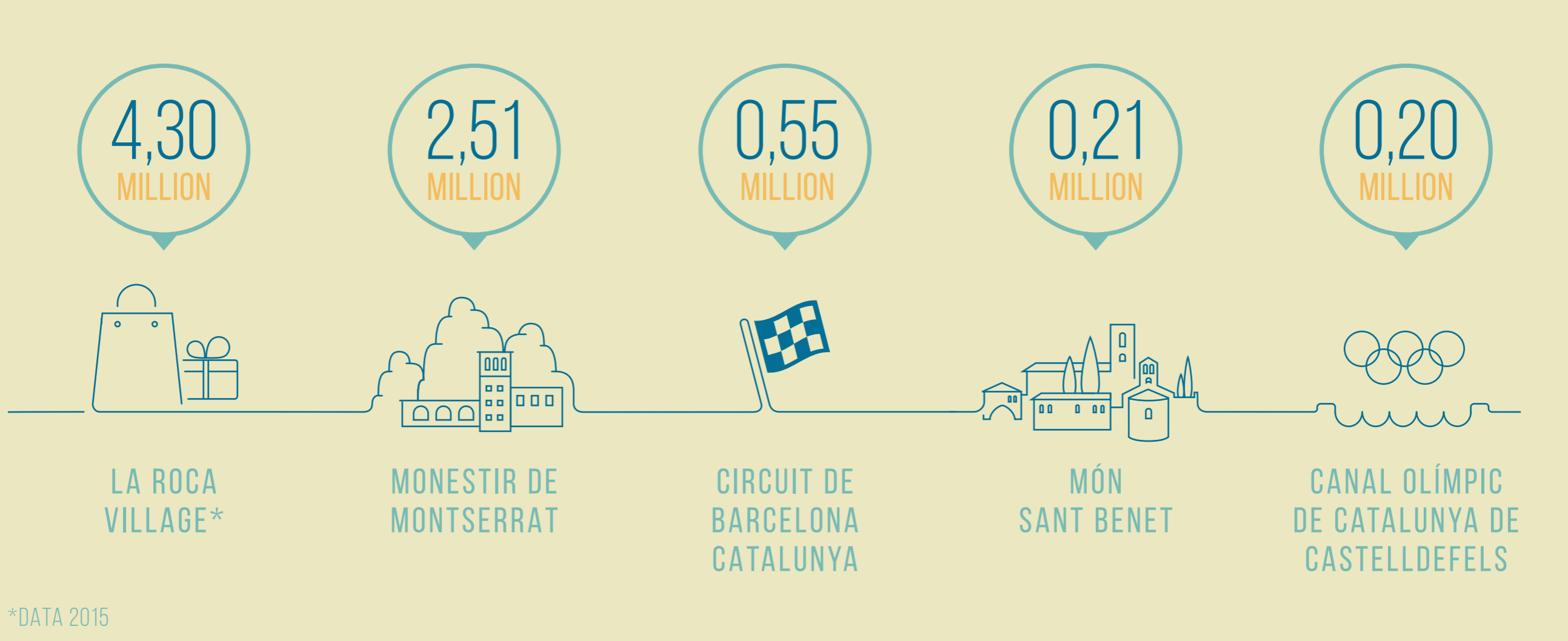


TOURIST PROFILE

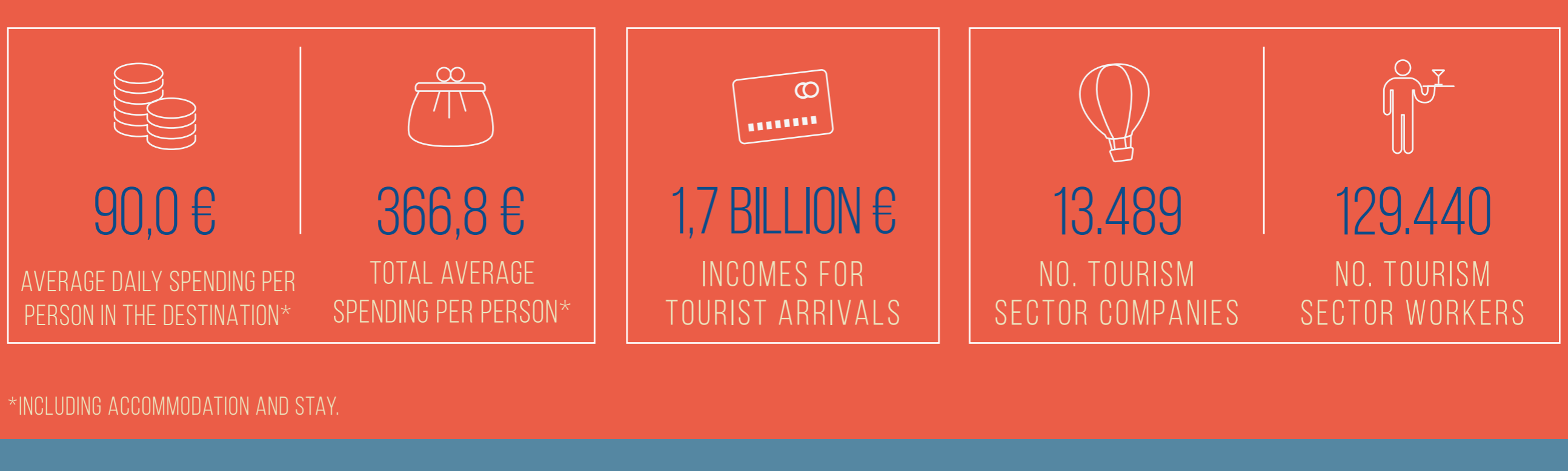


ATTRACTIONS

NUMBER OF VISITORS TO PRINCIPAL ATTRACTIONS

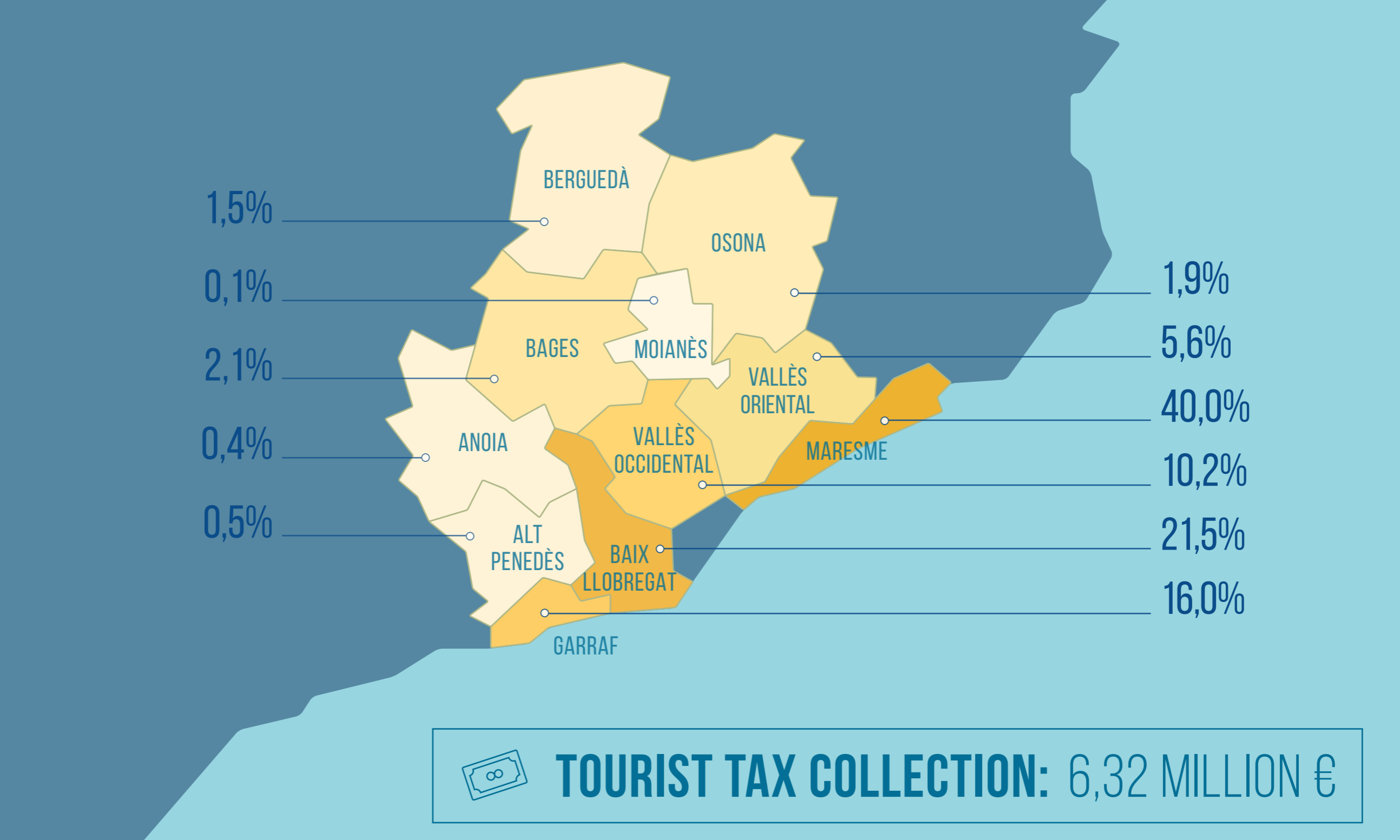


ECONOMIC IMPACTS



TOURIST TAX

REGIONAL DISTRIBUTION OF THE TOURIST TAX COLLECTION



VALUATION AND REPUTATION



SOURCES: TOURIST ACCOMMODATION OCCUPANCY SURVEY (INE AND IDESCAT); CHARACTERIZATION OF TOURISTS SURVEY EDETUR (LABTURISME); DIRECCIÓ GENERAL DE TURISME AND DEPARTAMENT D'EMPRESA I OCUPACIÓ DE GENERALITAT DE CATALUNYA; GERÈNCIA DE SERVEIS DE TURISME, OFICINA TÈCNICA DE PARCS NATURALS AND XARXA DE MUSEUS LOCALS OF BARCELONA DEPUTATION, AND EQUIPMENT AND PLACES OF INTEREST OF BARCELONA SURROUNDINGS.