

RF-7-42

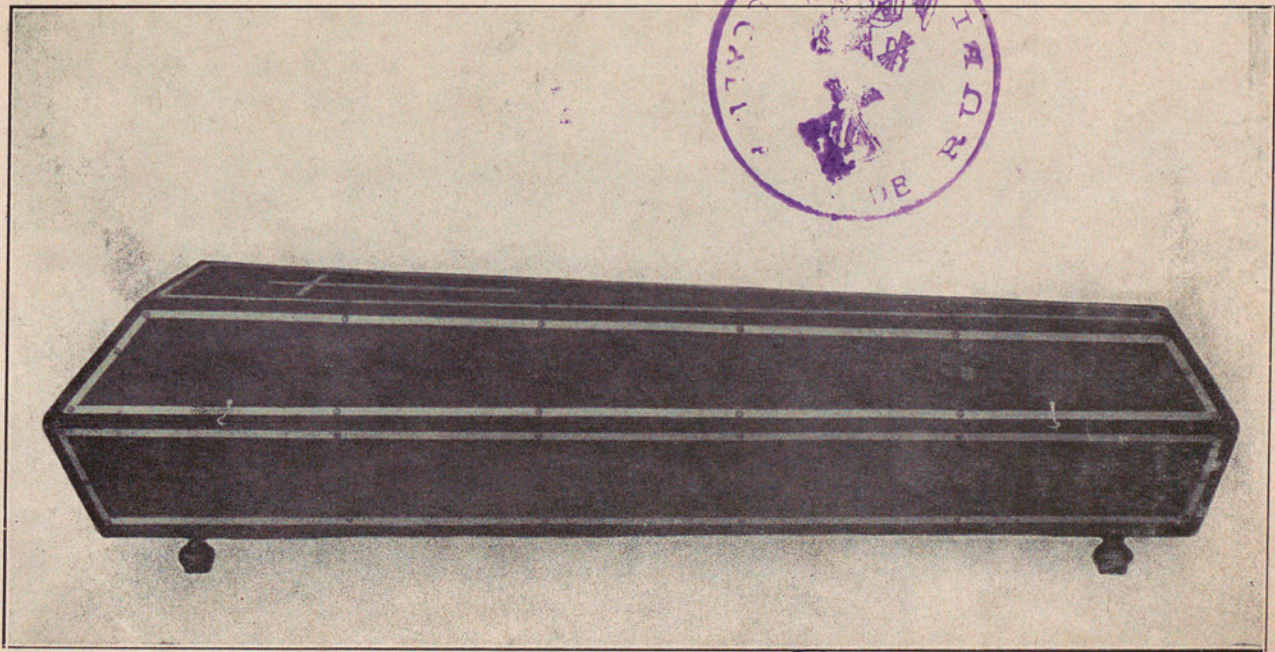
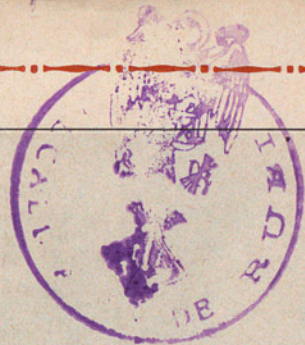


Nº 1 Ph 50



R. 19991

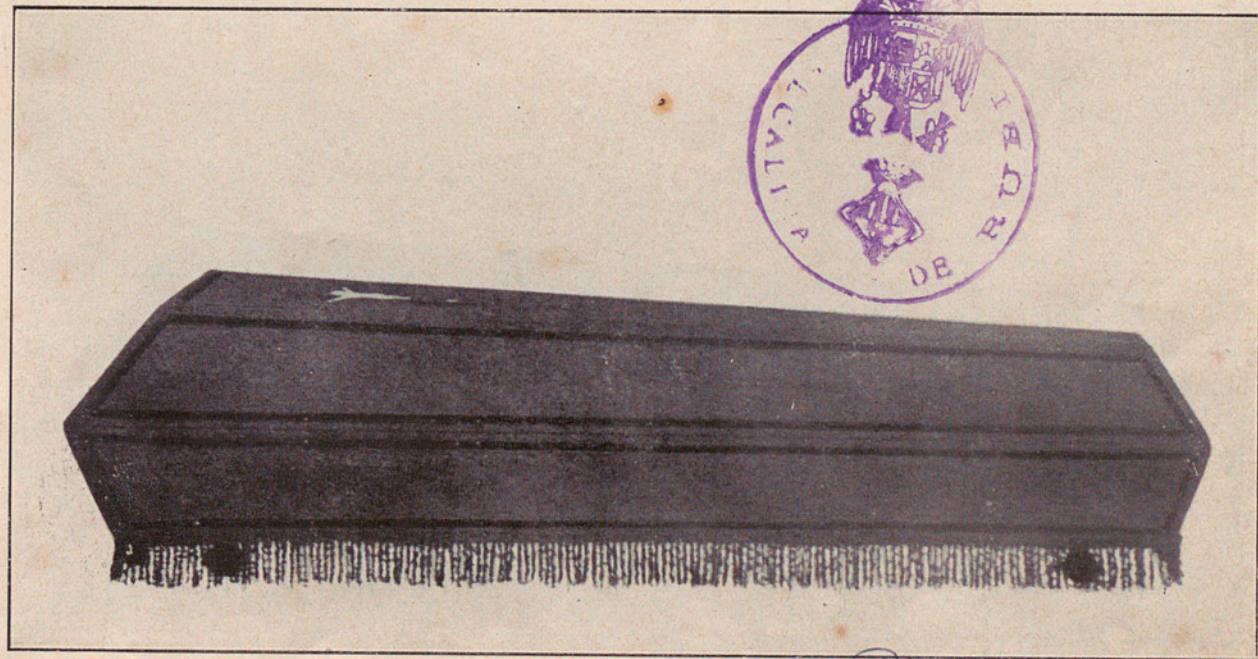




Arxiu General de la Diputació de Barcelona. Biblioteca

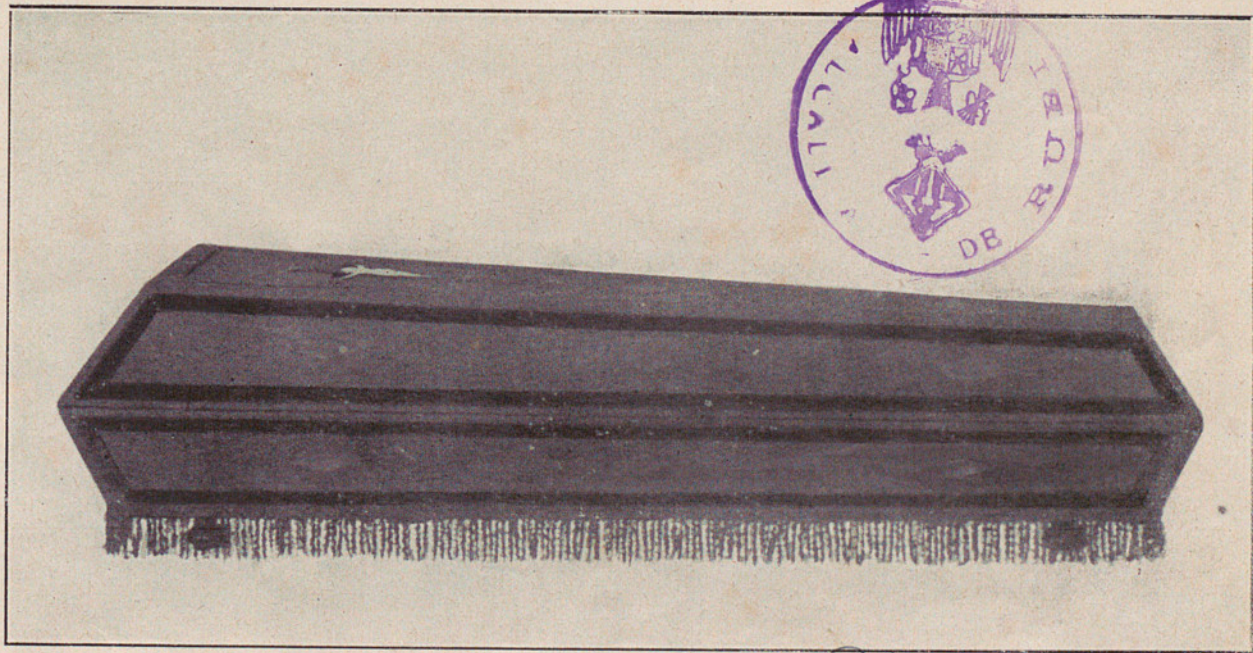
Nº 2 Ph 45





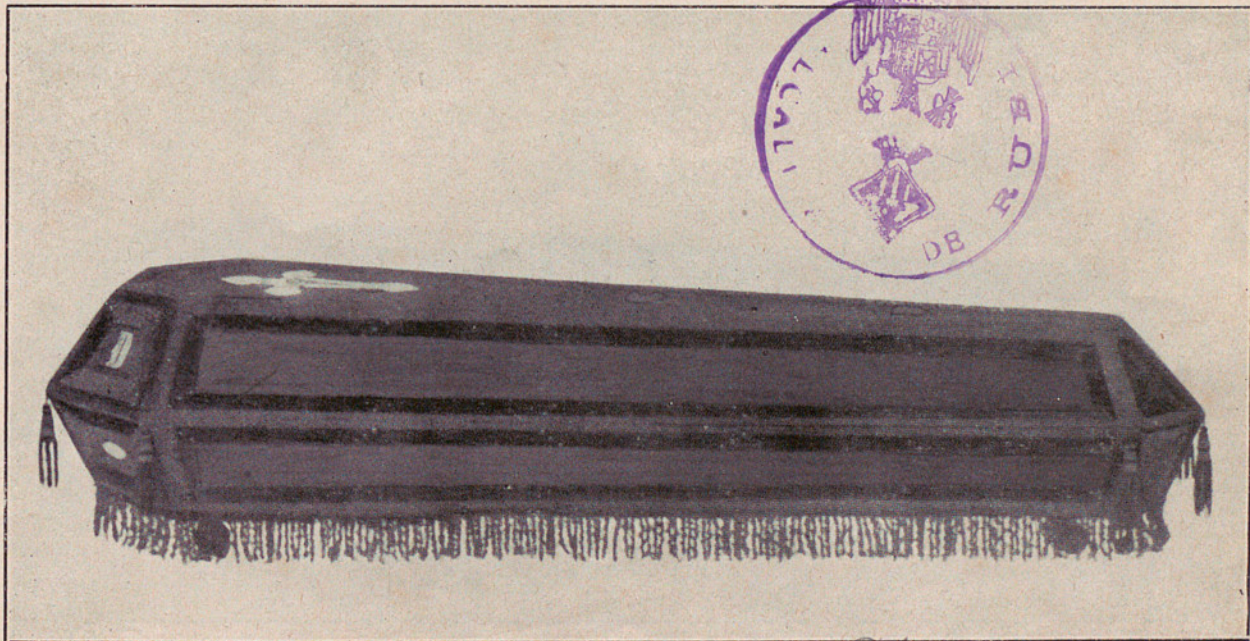
N.º 3 Ph 95





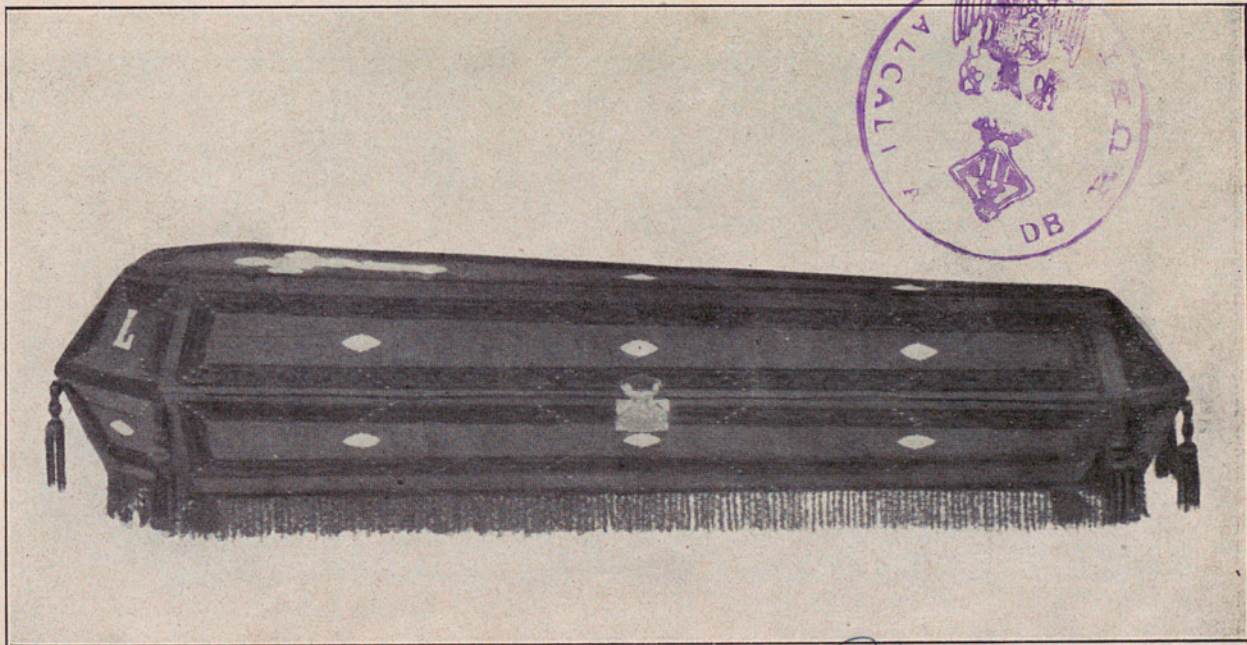
N.º 41 Ph 125





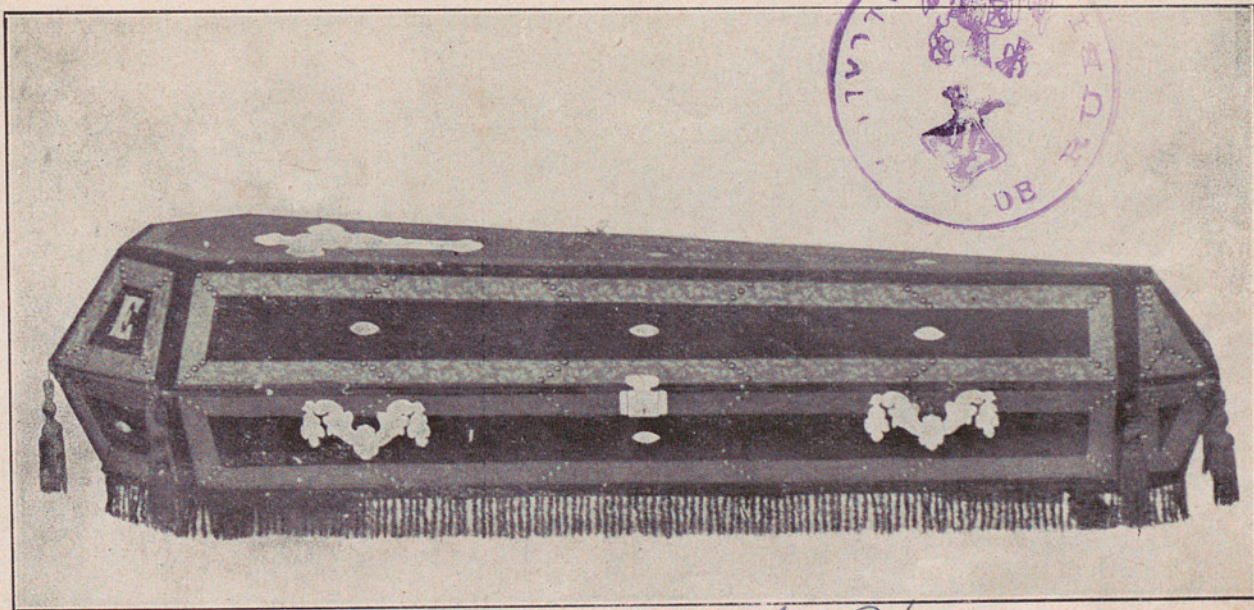
N.º 5 Pl. 160





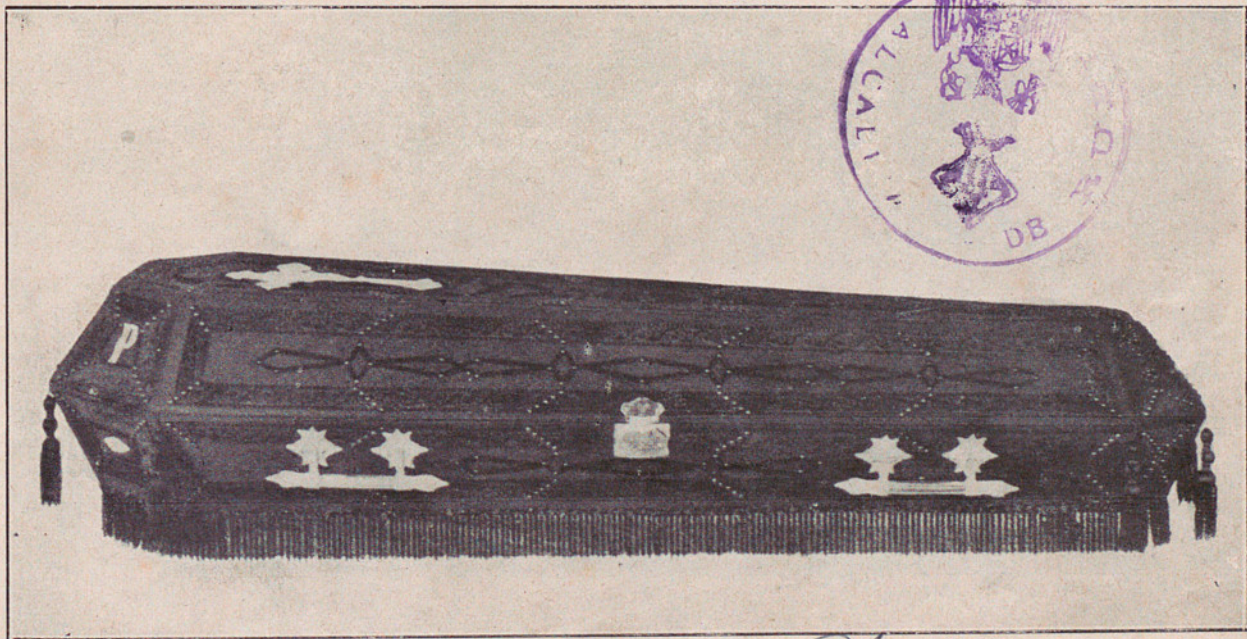
N.º 6 P/ 225





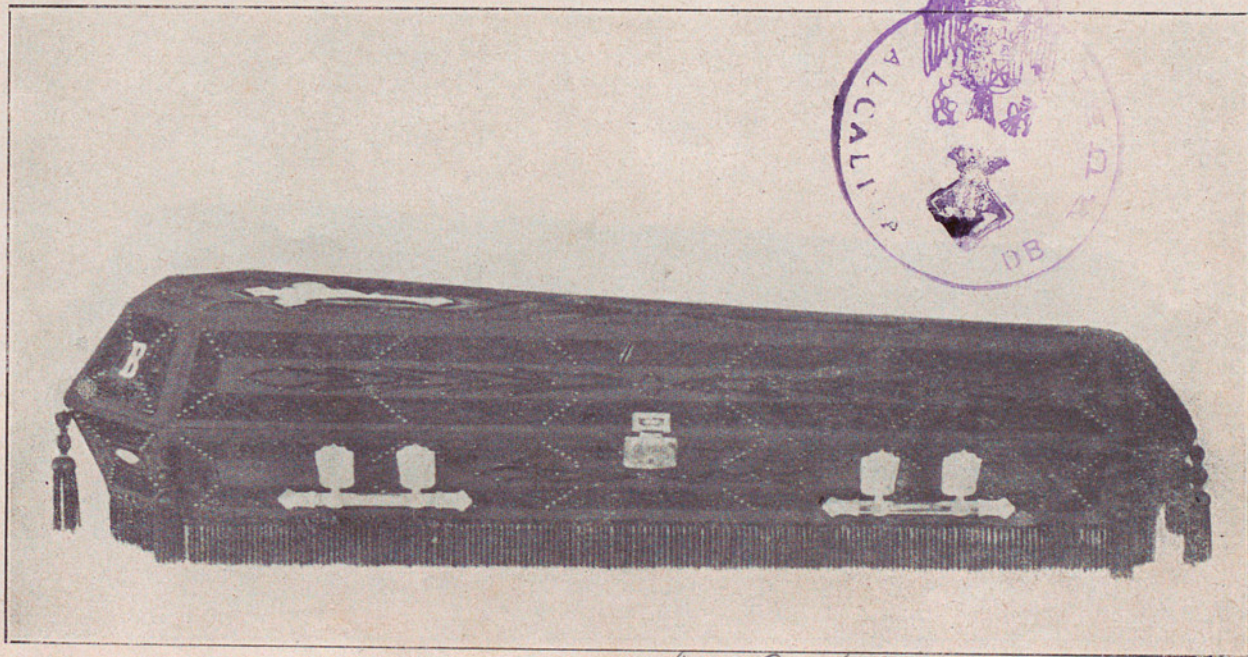
N.º 7 P.º 250





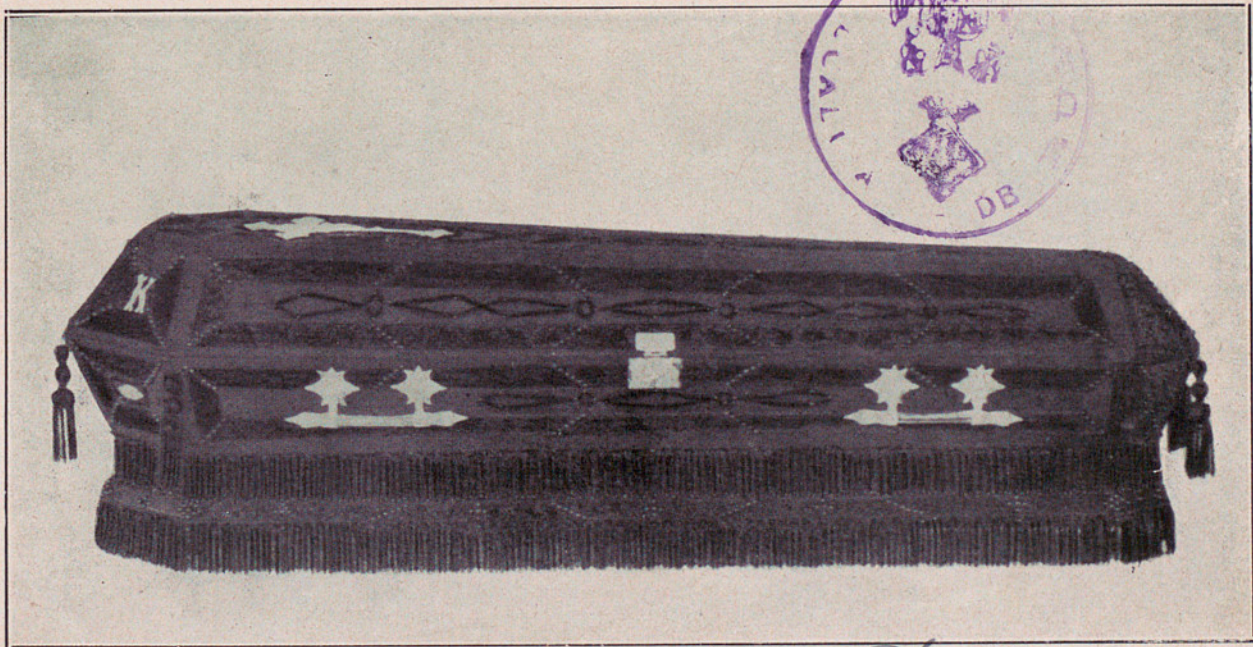
N.º 8 Ph 350



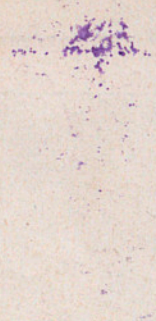


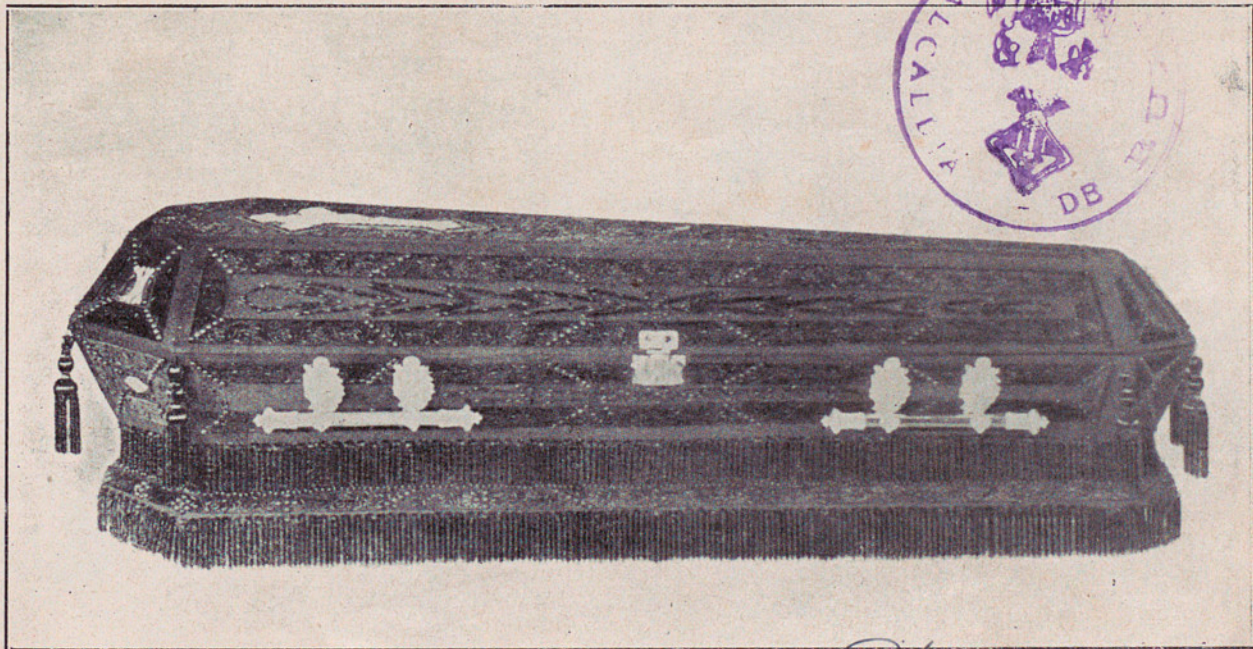
Nº 9 495



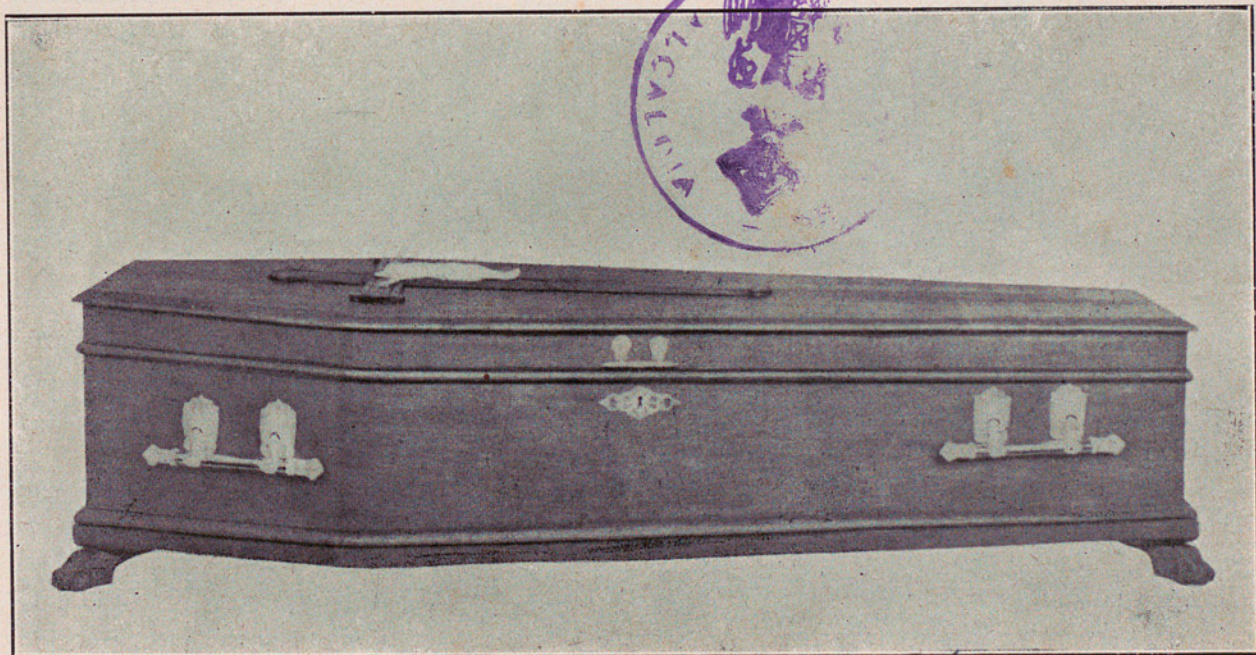


N.º 10 Ph 650

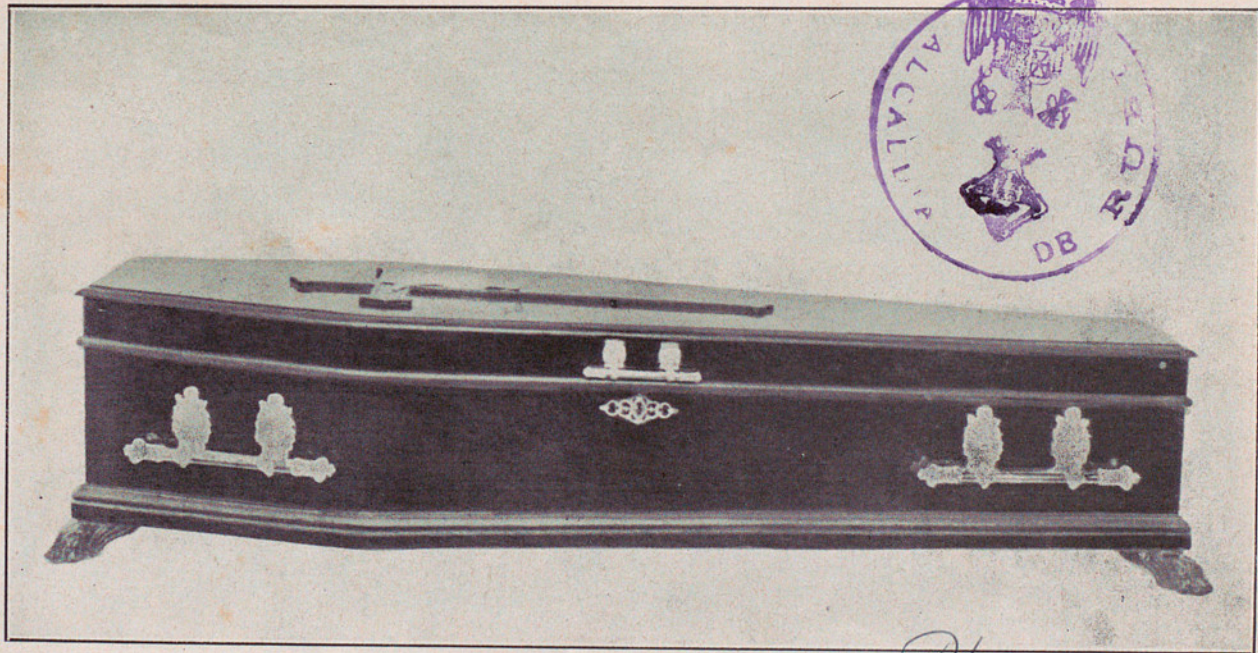




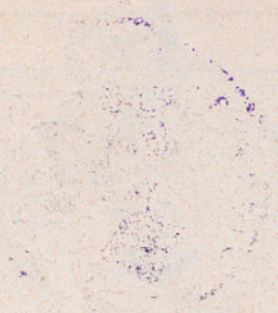


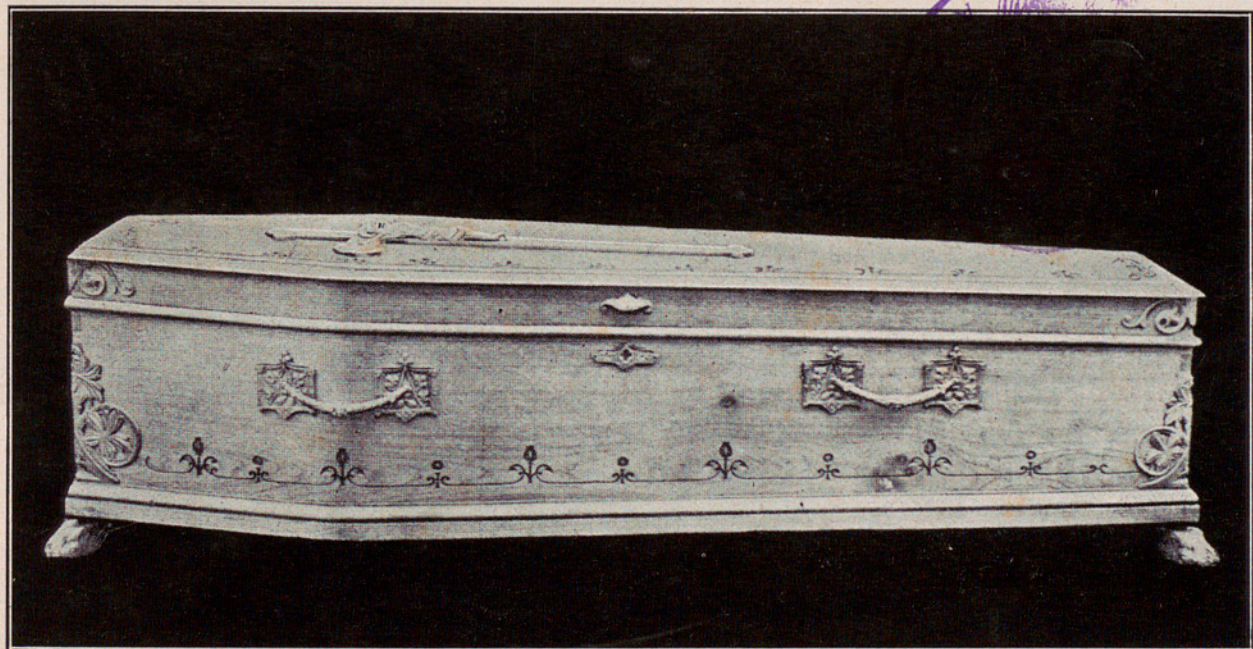






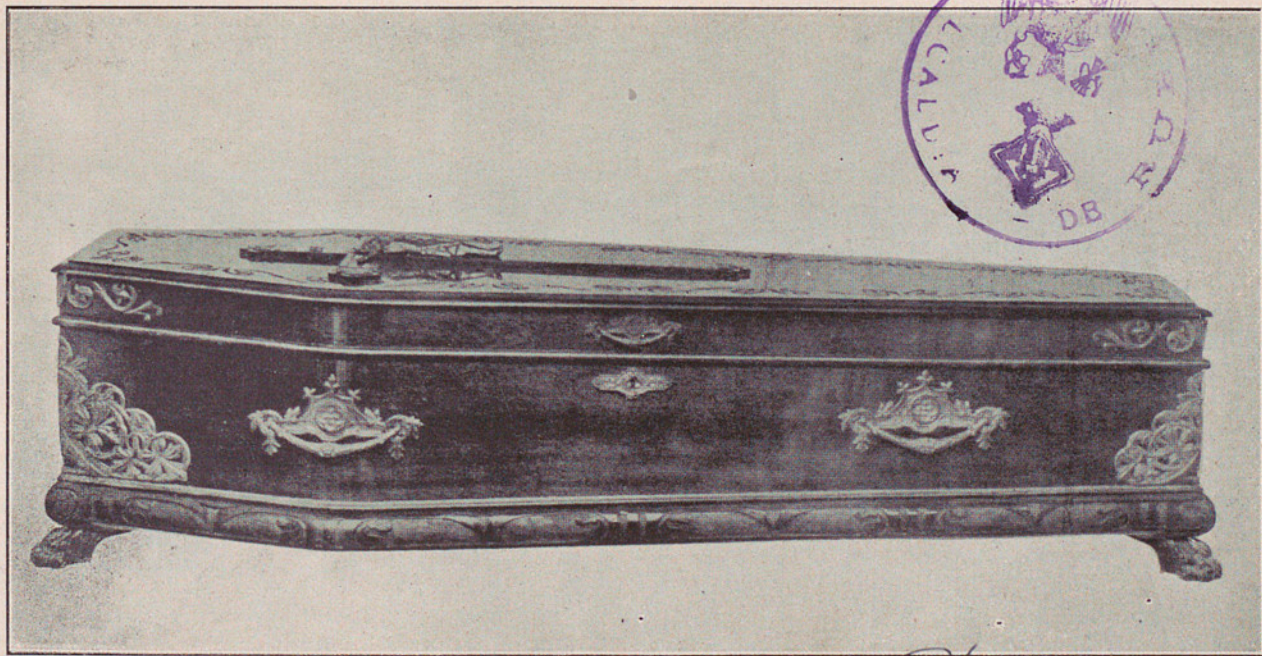
N.º 13 Ph 1800





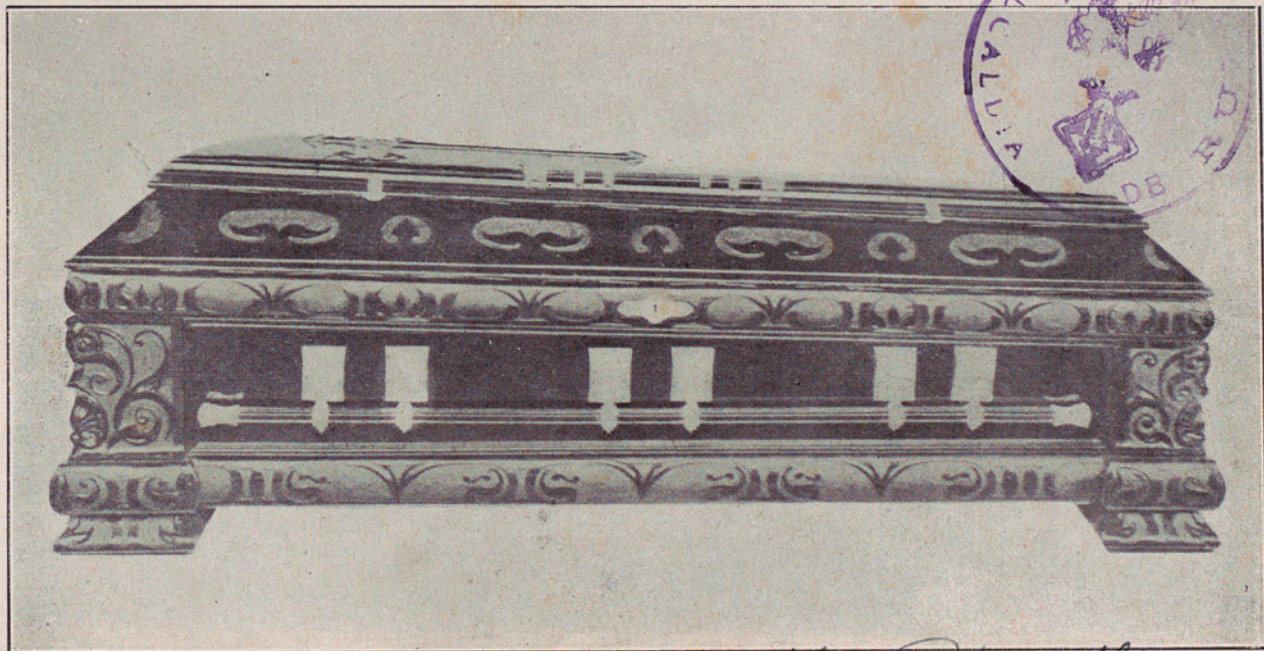
N.º 141 Pts 2800





N.º 15 P<sup>h</sup> 3500  
N.º 16 o 4500

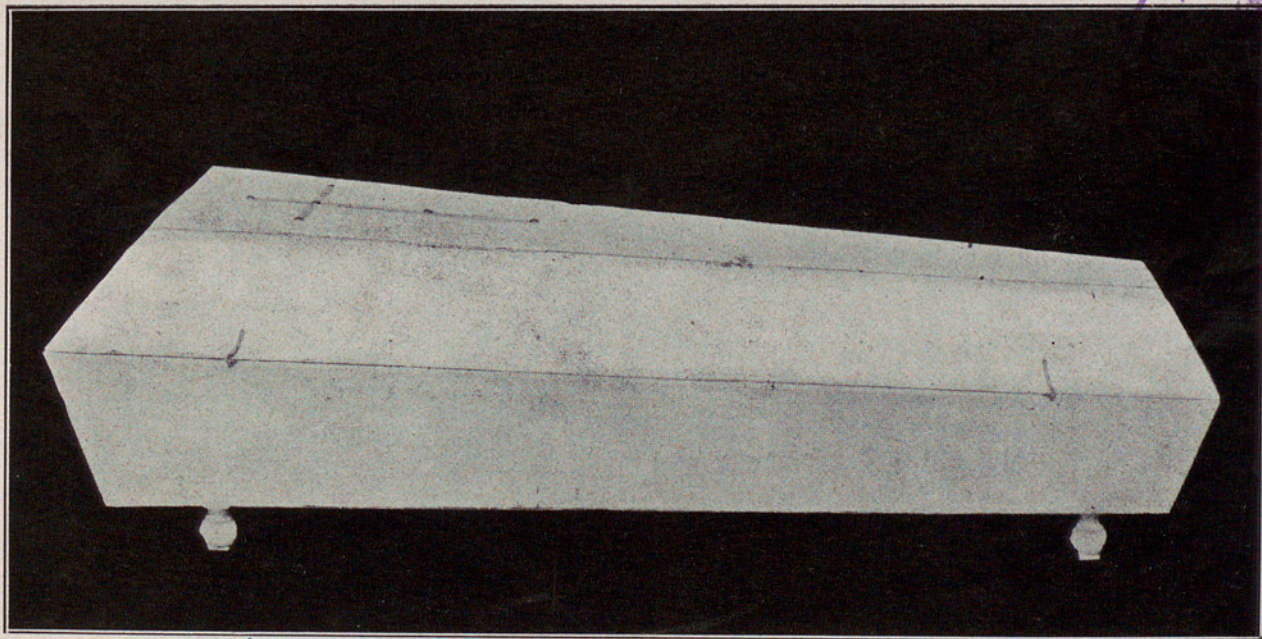




Arxiu General de la Diputació de Barcelona, Biblioteca

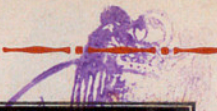
Nº 17 Ph 5,50  
4 18 " 8,000



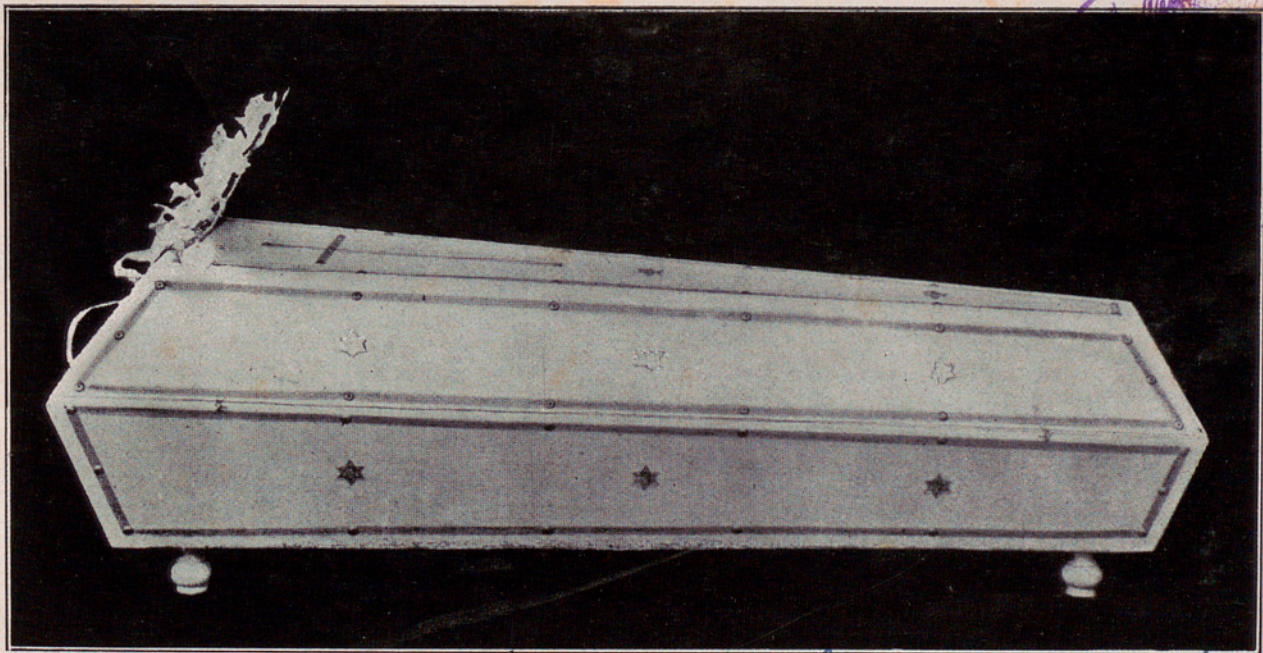


*N.º 20 de l'any 1.º Ph. 50*





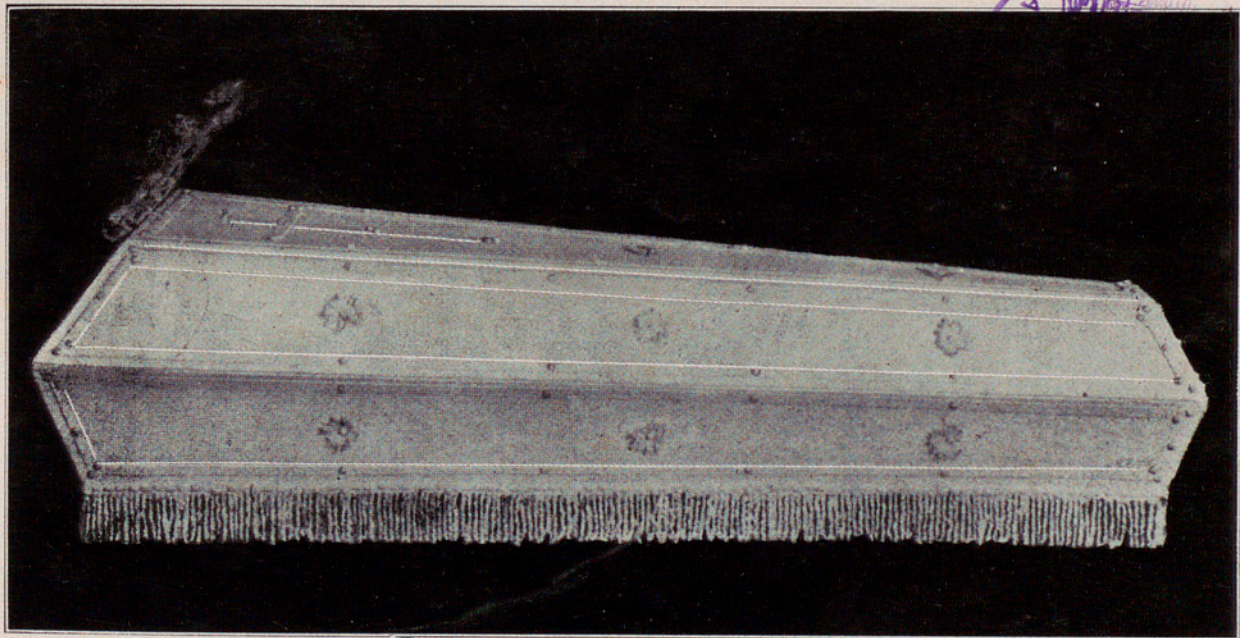
11  
D  
F



N.º 21 de fets a l'aire Ph 50 hasta 3 Ph 60 hasta 5 Ph 75, hasta 12

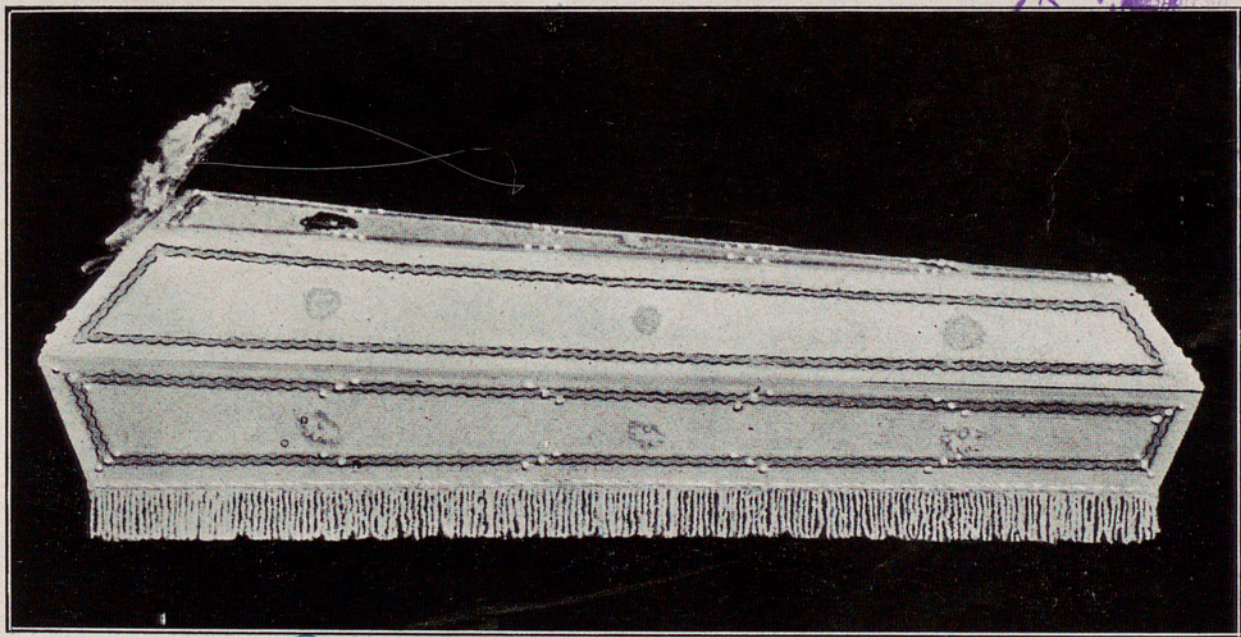
Ph 85-





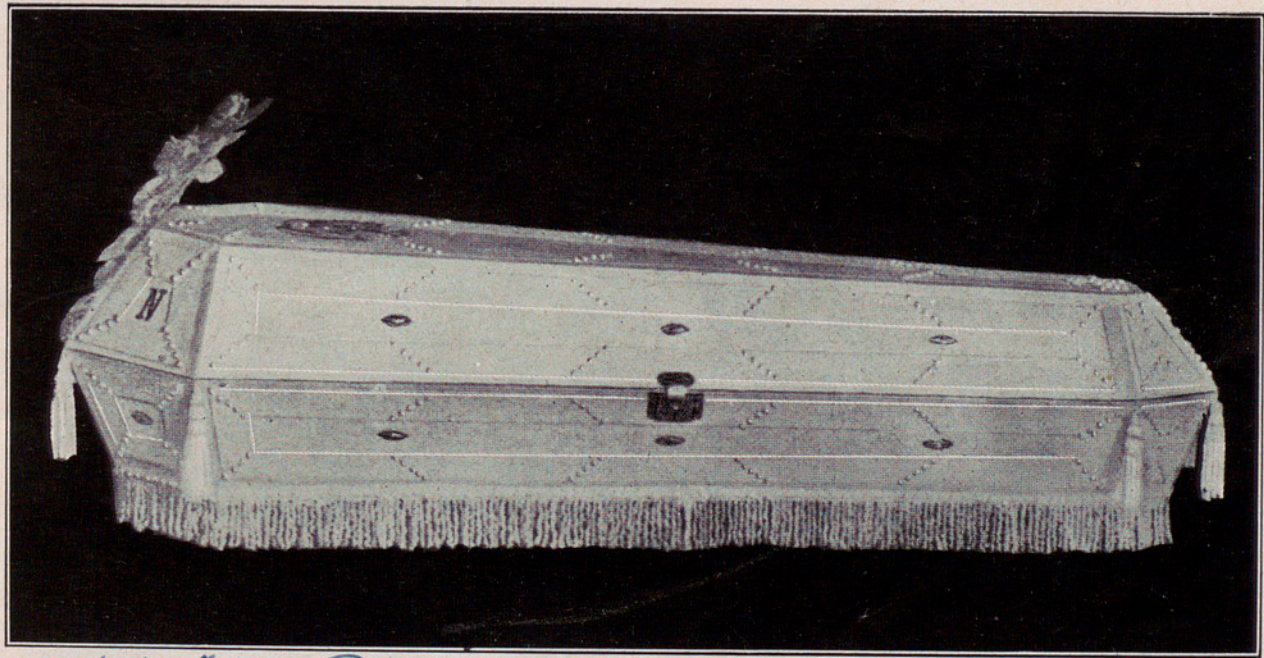
Nº 22 = Ph 65 - 70 - 75 - 85 -





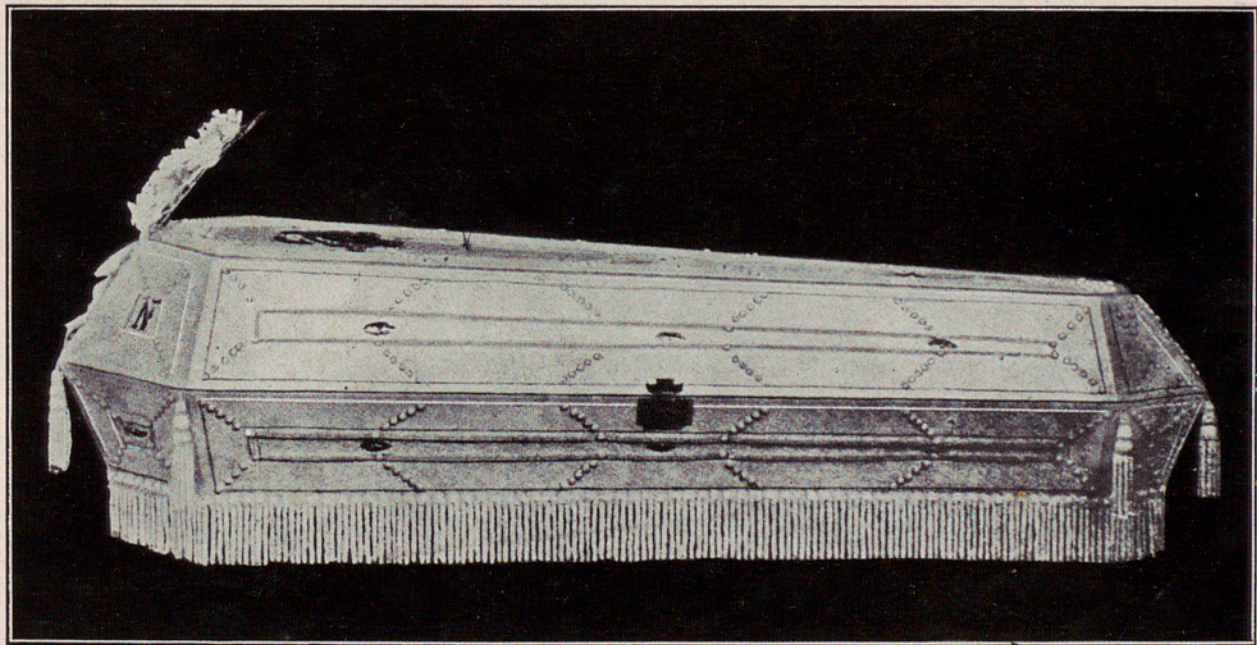
Nº 23 Ph 75 - 80 - 90 - 95





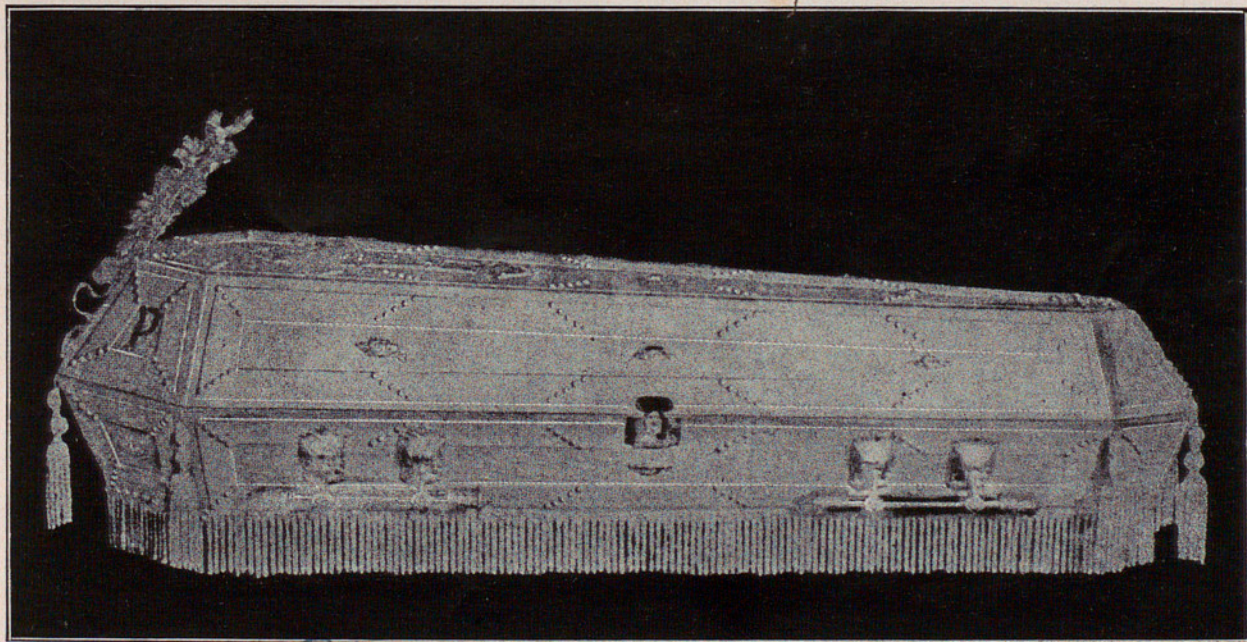
Nº 24 Pls 135 - 150 - 170 - 180

U



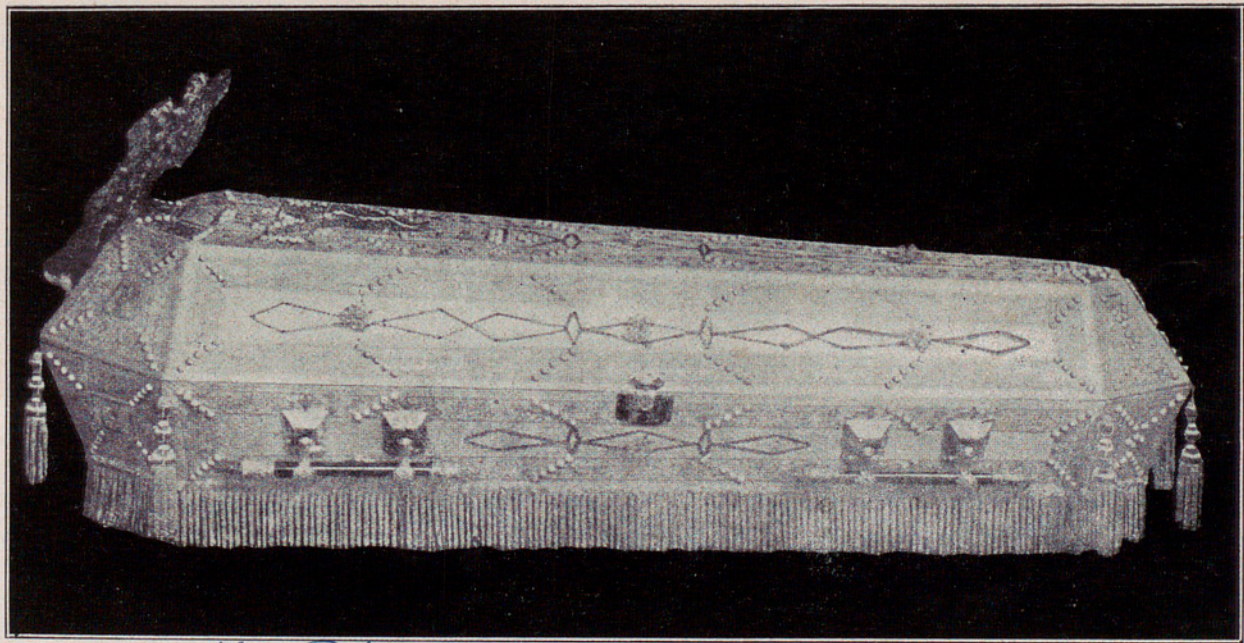
Nº 25 Ph 160 - 170 - 190 - 200





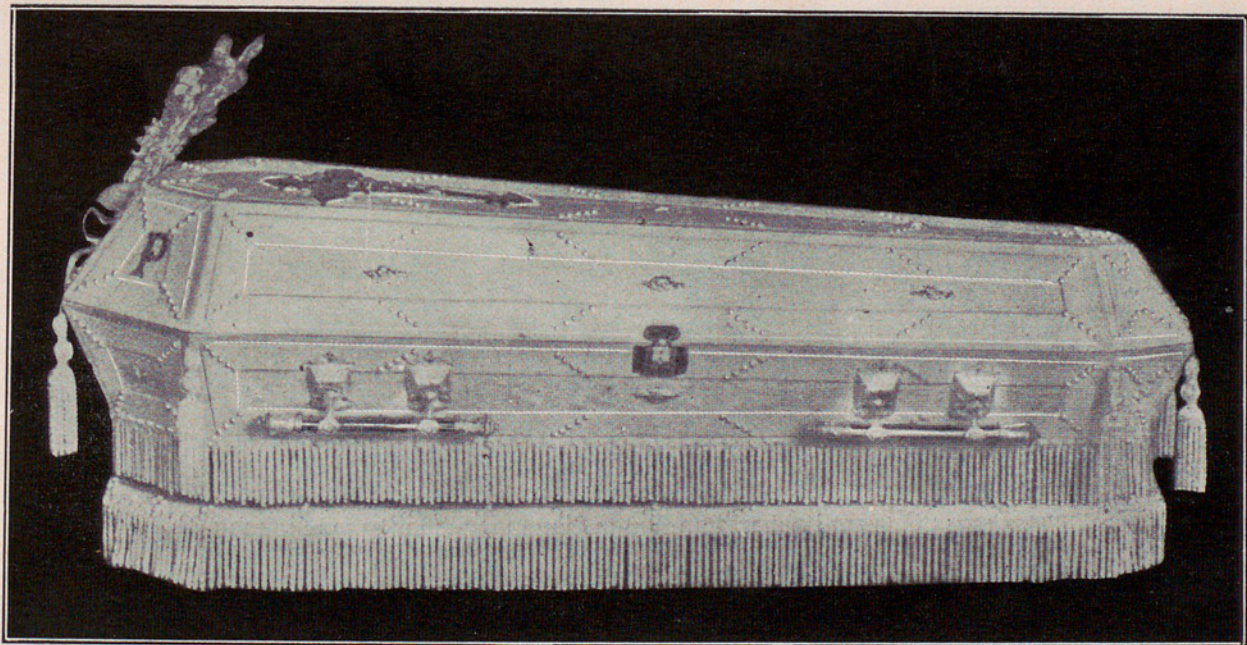
Nº 26 Pt 285 - 315 - 385 - 415





Nº 24 95 465 - 495 - 575 - 610





N.º 28 Pl. 575. 700 - 750 - 850



